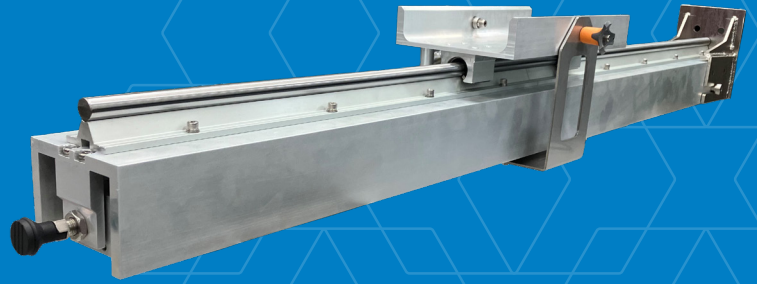




M357™

Rodless Retract



The M357 Rodless Retract monitors pressure and flow for camera lens cooling and protects the device from high heat.

Mirion Technologies' high temperature imaging camera systems are cooled by air or water. If the plants' supply of air pressure, water or electricity is interrupted, the M357 Rodless Pneumatic Automatic Retract System will retract the camera from the most severe heat, protecting it from serious damage. With the camera retracted from the intense heat, the operator has time to arrive at the location and manually pull the lens clear of the viewport. They can then track the coolant and re-install the camera.

The M357 retraction system includes a ruggedized safety air reservoir and additional options such as locking pistons for downward-inclined camera installations.

Combine the M357 retraction system with M220S™ Dual Imaging Processor, M408™ Air Filter System, and the M557™ or M556™ HR for a complete monitoring solution.

FEATURES

- ✓ Monitors pressure and flow for camera lens cooling and pulls camera out of high heat if levels fall below preset values
- ✓ Operator override allows manual retraction for inspection and cleaning
- ✓ Multiple retraction lengths allow complete removal from boiler, kiln or furnace
- ✓ Remote control/monitoring versions available
- ✓ Universal power supply
- ✓ Temperature controller option

SPECIFICATIONS AND PERFORMANCE

RETRACT

- Cylinder: 40 mm (1.6 in) bore rodless system;
Options:
 - M357RTA03A/0.5M - 500 mm (19.7 in) stroke
 - M357RTA03A/1M - 1000 mm (39.5 in) stroke
 - M357RTA03A/1.5M - 1500 mm (59 in) stroke
 - M357RTA03A/2M - 2000 mm (78.7 in) stroke
- Power Specification: 100-240 V ac, 50/60 Hz
- Ambient Temperature: 4 °C to 71 °C (40 °F to 160 °F)

RESERVOIR

- Dimensions: Clearance envelope; 490 x 240 x 225 mm (H x W x D) (19.3 x 9.4 x 8.9 in)
- Mechanical: 1/2 in NPT female threaded inlet, five micron filter, check valve at inlet to allow one-way air flow
- Air Hose: Aeroquip SH925 (5 m)
- Air Requirements:
Minimum 276kPa (40 psig)
Maximum 690kPa (100 psig)
- Air Storage: Reservoir stores enough air for one retraction
- Operation Modes: Automatic retract when air pressure drops below a set level or if power fails. For water cooled lens: Retracts when cooling flow drops below a set level. Camera can also be manually retracted and inserted by the operator.
- Min Air Pressure Set Point: Factory preset to 2.5 psig (17 kPa) min. lens pressure

CONTROLLER

Min Water Flow Set Point: 1 gpm

Controller Ambient Temp: 0 °C to 50 °C (32 °F to 122 °F)

Physical Dimensions: 305 x 254 x 127 mm (H x W x D)
(12 x 10 x 5 in)

Enclosure Specifications: NEMA 4 (IP54) Sheet steel, dipcoat primed and powder coated



Copyright © 2025 Mirion Technologies, Inc. or its affiliates. All rights reserved. Mirion, the Mirion logo, and other trade names of Mirion products listed herein are registered trademarks or trademarks of Mirion Technologies, Inc. or its affiliates in the United States and other countries. Third party trademarks mentioned are the property of their respective owners.